

Pooled Budgets for Health and Social Care

Wellbeing Impact Assessment Report

This report summarises the likely impact of a proposal on the social, economic, environmental and cultural well-being of Denbighshire, Wales and the world.

Assessment Number:	209
Brief description:	<p>The focus of the Social Services and Well-being (Wales) Act 2014 and its supporting regulations and codes of practice is on improving outcomes and the well-being of people, and improving efficiency and effectiveness of service delivery. Part 9 of the Act requires the establishment of formal partnership arrangements under the direction of regional partnership boards and is specific about the establishment of pooled funds in relation to:</p> <ul style="list-style-type: none"> • The exercise of care home accommodation functions; • The exercise of family support functions; • Functions that will be exercised jointly as a result of an assessment carried out under section 14 of the Act or any plan prepared under section 14A. The Statutory Guidance supporting the Act also refers to the integration of services in the following areas: • Older people with complex needs and long term conditions, including dementia. • People with learning disabilities. • Carers, including young carers. • Integrated Family Support Services. • Children with complex needs due to disability or illness.
Date Completed:	24/03/2017 10:21:43 Version: 1
Completed By:	Nicola Stubbins
Responsible Service:	Community Support Services
Localities affected by the proposal:	Whole County,

IMPACT ASSESSMENT SUMMARY AND CONCLUSION

Before we look in detail at the contribution and impact of the proposal, it is important to consider how the proposal is applying the sustainable development principle. This means that we must act "in a manner which seeks to ensure that the needs of the present are met without compromising the ability of future generations to meet their own needs."

Score for the sustainability of the approach

Could some small changes in your thinking produce a better result?

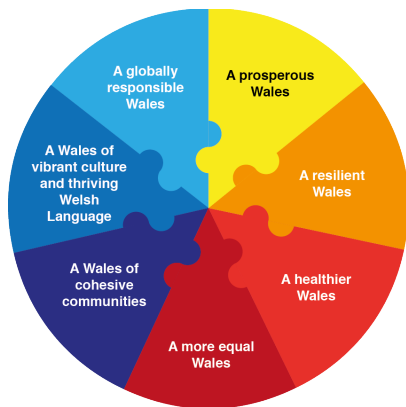
(3 out of 4 stars)



Actual score: 21/ 24.

Summary of impact

Wellbeing Goals



A prosperous Denbighshire

Neutral

A resilient Denbighshire

Neutral

A healthier Denbighshire

Positive

A more equal Denbighshire

Positive

A Denbighshire of cohesive communities

Positive

A Denbighshire of vibrant culture and thriving Welsh language

Positive

A globally responsible Denbighshire

Positive

Main conclusions

This is the first impact assessment undertaken as the project is at a very early phase and as our proposal develops we will review and revisit this impact assessment. There may well be a need to undertake an individual impact assessment of service integration in the future.

THE LIKELY IMPACT ON DENBIGHSHIRE, WALES AND THE WORLD

A prosperous Denbighshire

Overall Impact:	Neutral
Justification for Impact:	Integration of services and the decision as to whether to pool the budgets to deliver these services is a requirement within the Social Services and Well-being Act currently we are working regionally with partners to develop our regional vision for integration. We are also proposing to pilot some pooling of budgets in relation to Grant Funding Streams and that integrated service with a pooled budget in a Gwynedd locality. The learning from these will shape further development around integration of services and pooled budgets.

Positive consequences identified:

Until the vision for integration is known and agreed by partners this is unknown at present

Development may result in opportunities for community resilience initiatives

It is unclear as the development of integration and pooled budgets is at an early stage. There will be some pilot developments in localities across North Wales and learning from these will provide a clearer understanding

It is unclear as the development of integration and pooled budgets is at an early stage. There will be some pilot developments in localities across North Wales and learning from these will provide a clearer understanding

Until the vision for integration is known and agreed by partners this is unknown at present

Until the vision for integration is known and agreed by partners this is unknown at present

Unintended negative consequences identified:

Until the vision for integration is known and agreed by partners this is unknown at present

Integrating services across Health and Social Care could result in negative impact on current employee terms and conditions.

Mitigating actions:

Once the regional vision for the integration of services has been agreed by partners and areas of integration and pooled budgets identified this impact assessment will be revisited.

A resilient Denbighshire

Overall Impact:	Neutral
Justification for Impact:	Currently we are not clear about the impact in relation to resilience however, we would strive to ensure that any integration and pooling of budgets strengthens resilience of communities

Positive consequences identified:

It is unclear as the development of integration and pooled budgets is at an early stage. There will be some pilot developments in localities across North Wales and learning from these will provide a clearer understanding

Unintended negative consequences identified:

Regional working may incur longer traveling times

Mitigating actions:

Unknown at present time

A healthier Denbighshire

Overall Impact:	Positive
Justification for Impact:	To improve outcomes and health and wellbeing and provide co-ordinated person centred care and support

Positive consequences identified:

The focus of the Social Services and Well-being Act is improving outcomes to citizens to include integration of services for all populations this would include social and physical environments
Community resilience/early intervention initiatives could include luncheon clubs for the elderly and the provision of meals for vulnerable people, however it will depend on what services are agreed in the scope of this project
Community resilience/early intervention initiatives could include opportunities to access leisure facilities for different groups of the population however it will depend on what services are agreed in the scope of this project
Improve care and support, ensuring older people with more complex needs and long term conditions, and that citizens who are in need of care and support have voice choice and control.
This project will focus on integration of Health and Social Care services and the pooling of budgets and the pooling of budgets will be a mechanism of delivering these.

Unintended negative consequences identified:

Mitigating actions:

Consultation with service users and staff so that we deliver the outcome that is right for them.

A more equal Denbighshire

Overall Impact:	Positive
Justification for Impact:	To improve care and support, ensuring people have more say and control by providing co-ordinated, person centred care and support

Positive consequences identified:

We will deliver integrated services for Children with complex needs, Older people with complex needs, people with learning disabilities and carers. There may be further opportunities to integrate services and pool budgets to improve the well-being of a wider group of people with protected characteristics however they are not currently in scope

As this is integration of health and social care services, health inequalities for areas within scope should be improved

Using the What Matters within service delivery across Health and Social Care should improve this aspects for individuals

Unintended negative consequences identified:

Mitigating actions:

Ensuring equity of service provision across the region

A Denbighshire of cohesive communities

Overall Impact:	Positive
Justification for Impact:	Integration should only be undertaken with citizens at the heart of service delivery and integration of services should only be undertaken where there is evidence of better outcomes for citizens.

Positive consequences identified:

Within health and social care services the safeguarding of individuals is paramount whatever the level of integration or pooling of budgets

This is a fundamental aspect in providing services in line with the Social Services and Well-being Act

Unintended negative consequences identified:

Mitigating actions:

A Denbighshire of vibrant culture and thriving Welsh language

Overall Impact:	Positive
Justification for Impact:	People who prefer to receive services in Welsh will do so.

Positive consequences identified:

Mwy Na Geiriau requires health and social care services to be delivered in the language choice of the service user. The Welsh Language Act also relates to Health and Social Care Services.

Promotion of services will be bilingual. Some of the regions authorities business language is Welsh.

Utilise events across the region to promote the Welsh culture within Health and Social Care services

Unintended negative consequences identified:

This may cause issues for staff that are not currently welsh speakers

Mitigating actions:

A globally responsible Denbighshire

Overall Impact:	Positive
Justification for Impact:	Utilise local businesses so that they continue to thrive within communities

Positive consequences identified:

There are a number of independent and third sector providers based locally across the region and they need to be supported to continue to thrive.

This is managed within contractual and employment terms and conditions

Unintended negative consequences identified:

Larger providers of health and social care services move into the region to deliver services therefore will de stabilise smaller more local providers

Mitigating actions: